



GAMA Funds – Global Short-Dated Opportunities

“A perfect vehicle to benefit from higher interest rates”

2% Above
Cash Yield

Daily
Liquidity

Among BEST
funds

Hedged Yield
@ 6.34% in \$, 4.83%
in €, 2.26% in CHF

Worldwide

>150 issuers

Maximum

3-year maturity

BBB

Fundamental
credit
selection

3Y Track-record

>150mios EUR Aum

GAMA Funds - Global Short-Dated Opportunities



INVESTMENT STRATEGY

Short-term bond fund for investors seeking a higher yield than that of money market funds over one year or more.

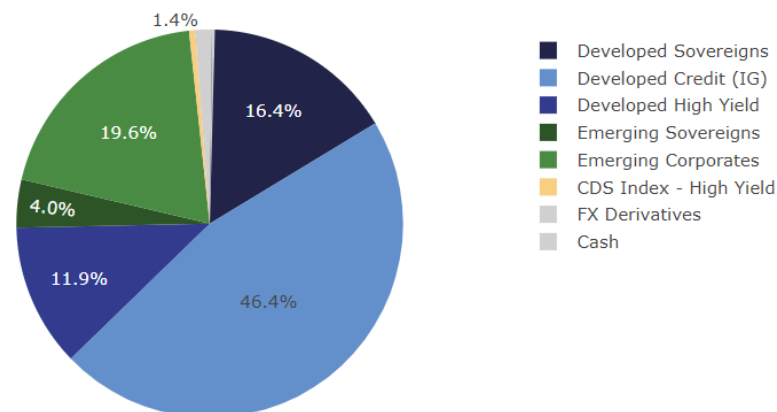
- Estimated forward-looking return: cash + 2%
- Capital preservation and income with short-dated bonds (max. 20% allowed in bonds >3y) and CDS indices (up to 5y)
- Credit selection broadly diversified across countries & sectors with currency exposures hedged into the base currency

Credit Exposure	↗↗	Medium
Interest Rate Exposure	↗	Low
Currency Exposure	-	Fully hedged

PORTFOLIO CHARACTERISTICS

Hedged Yield (USD/EUR/CHF)	6.34%/4.83%/2.26%
Average yield ex currency hedges	5.64
Average effective maturity (y)	2.29
Average interest-rate duration	1.76
Average spread duration	2.08
Average credit rating of bonds	BBB+
Average credit spread (bps)	160
Number of issuers	172

BREAKDOWN BY SEGMENT

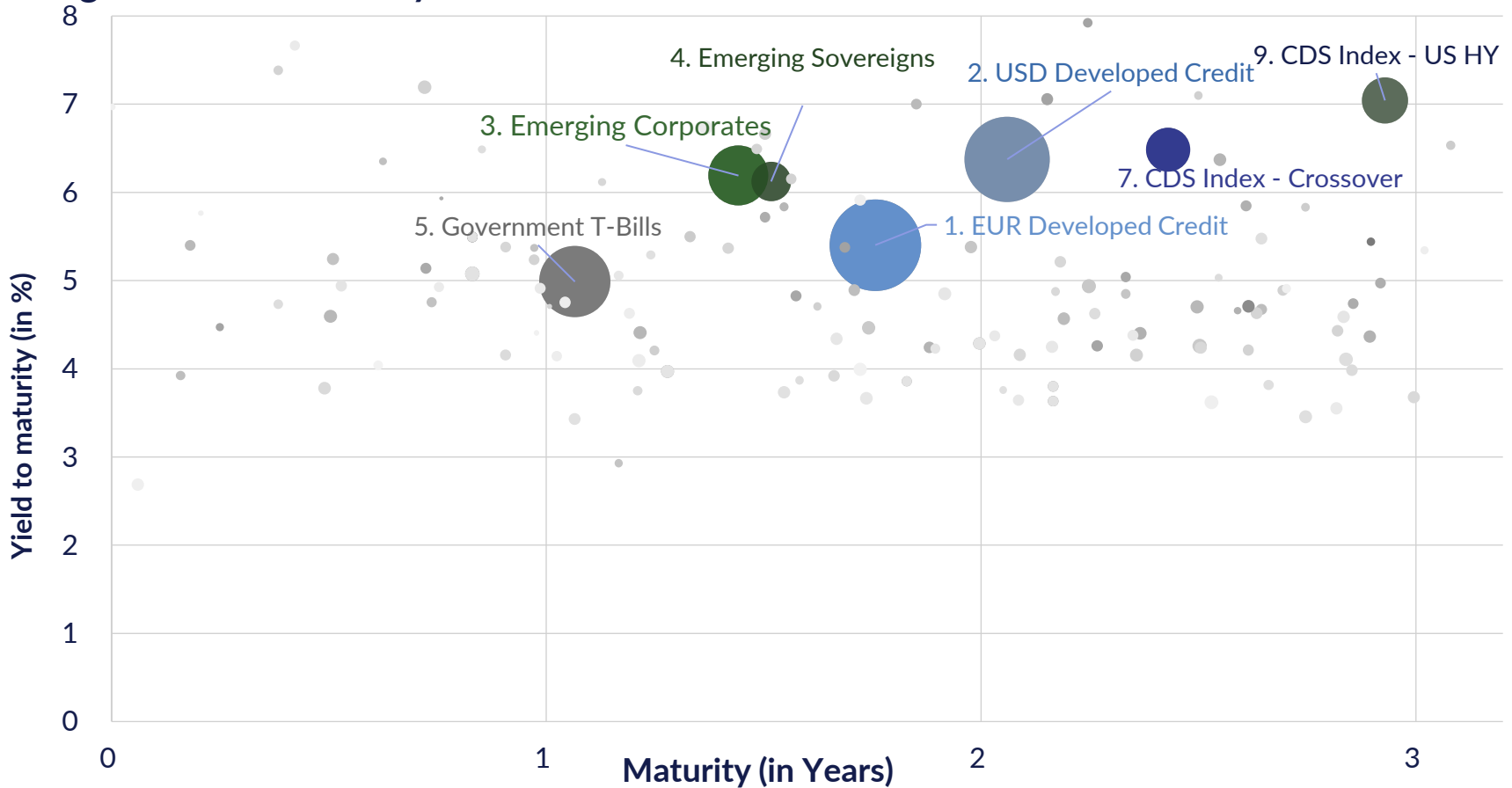


Portfolio characteristics may change at any time. Please refer to the fund prospectus for the investment guidelines.

GAMA Funds - Global Short-Dated Opportunities



Hedged Yield to maturity

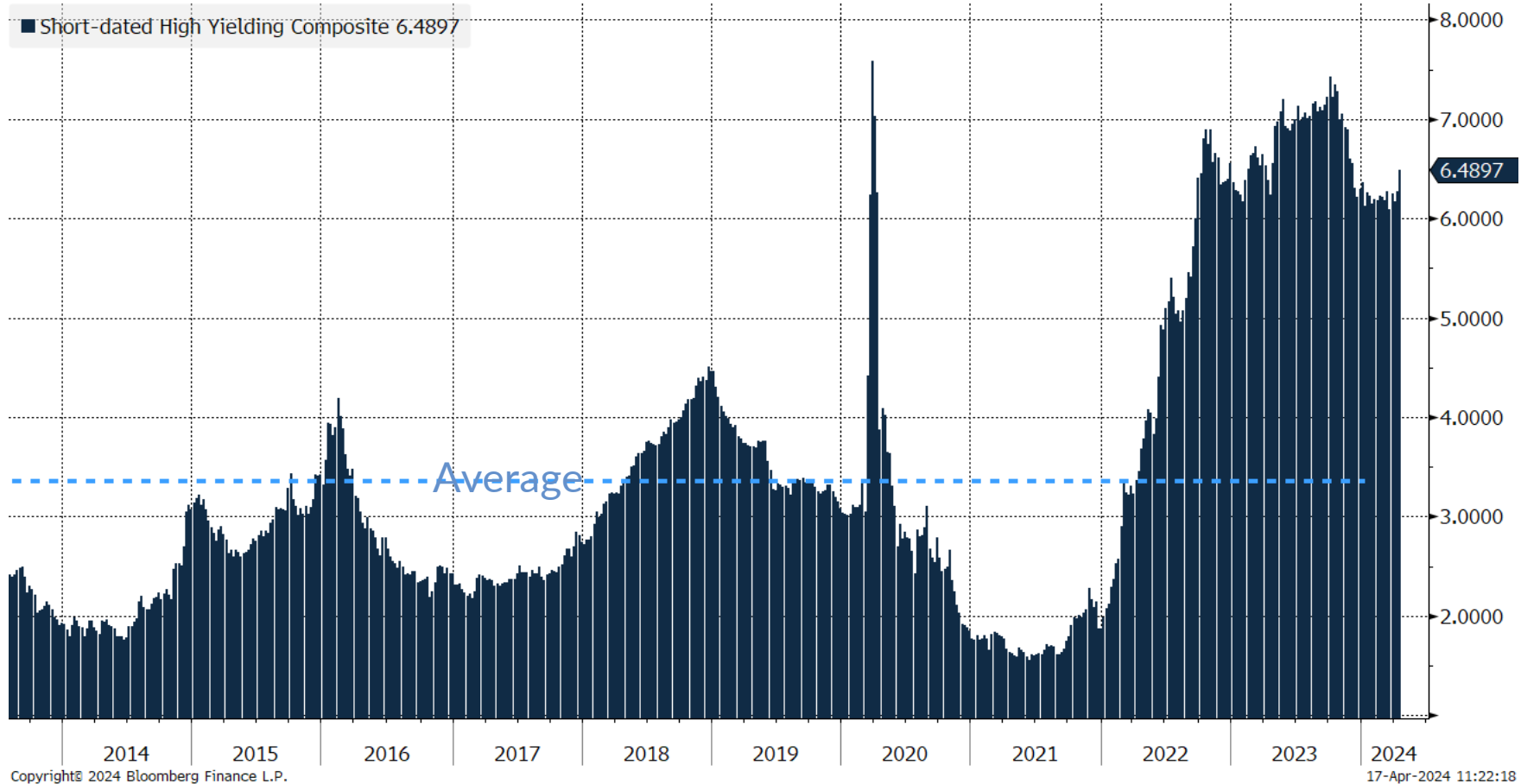


Each dot represents a specific bond and each circle represents the fixed income segment proportional to its weight.

Source: Bloomberg, GAMA

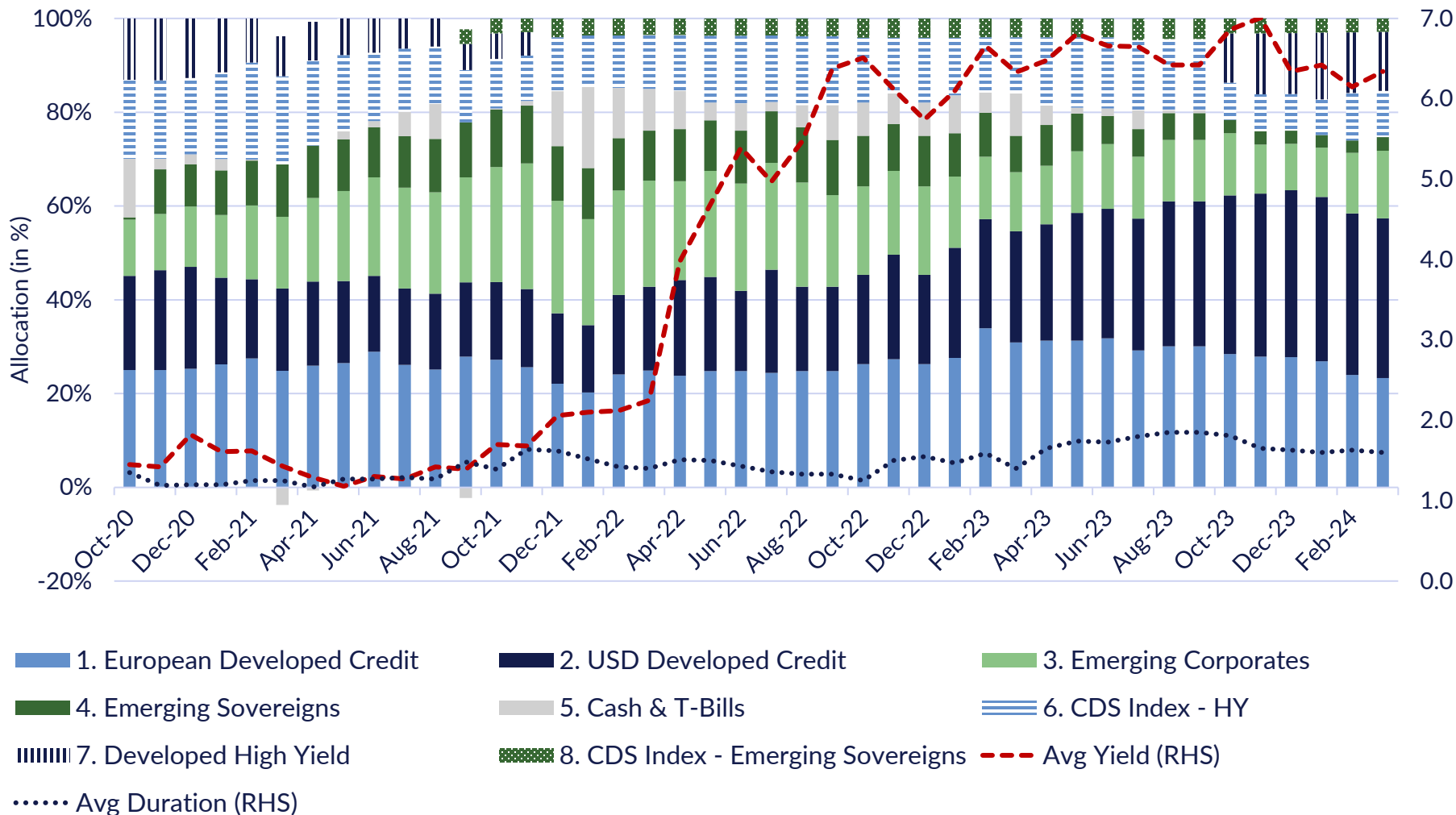
Short-Dated Opportunities Offering Attractive Yield

Short-dated High Yielding composite is close to its decade's record



Source: Bloomberg, GAMA calculations, Short-dated high yielding composite, with 1/3 Developed credit, 1/3 Emerging Credit and 1/3 T-Bills in USD.

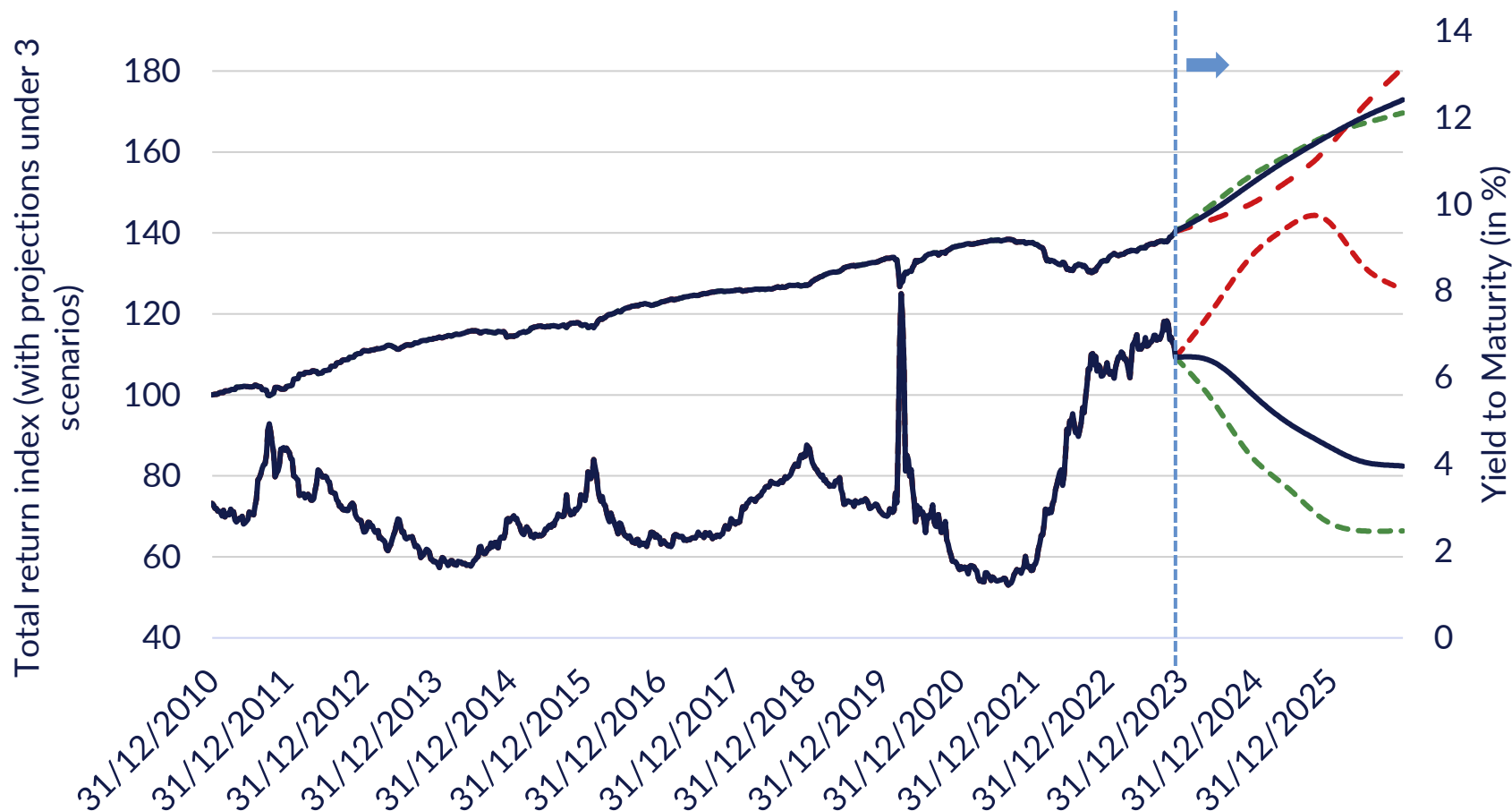
GAMA Funds - Global Short-Dated Opportunities



GAMA Short-Dated Strategy

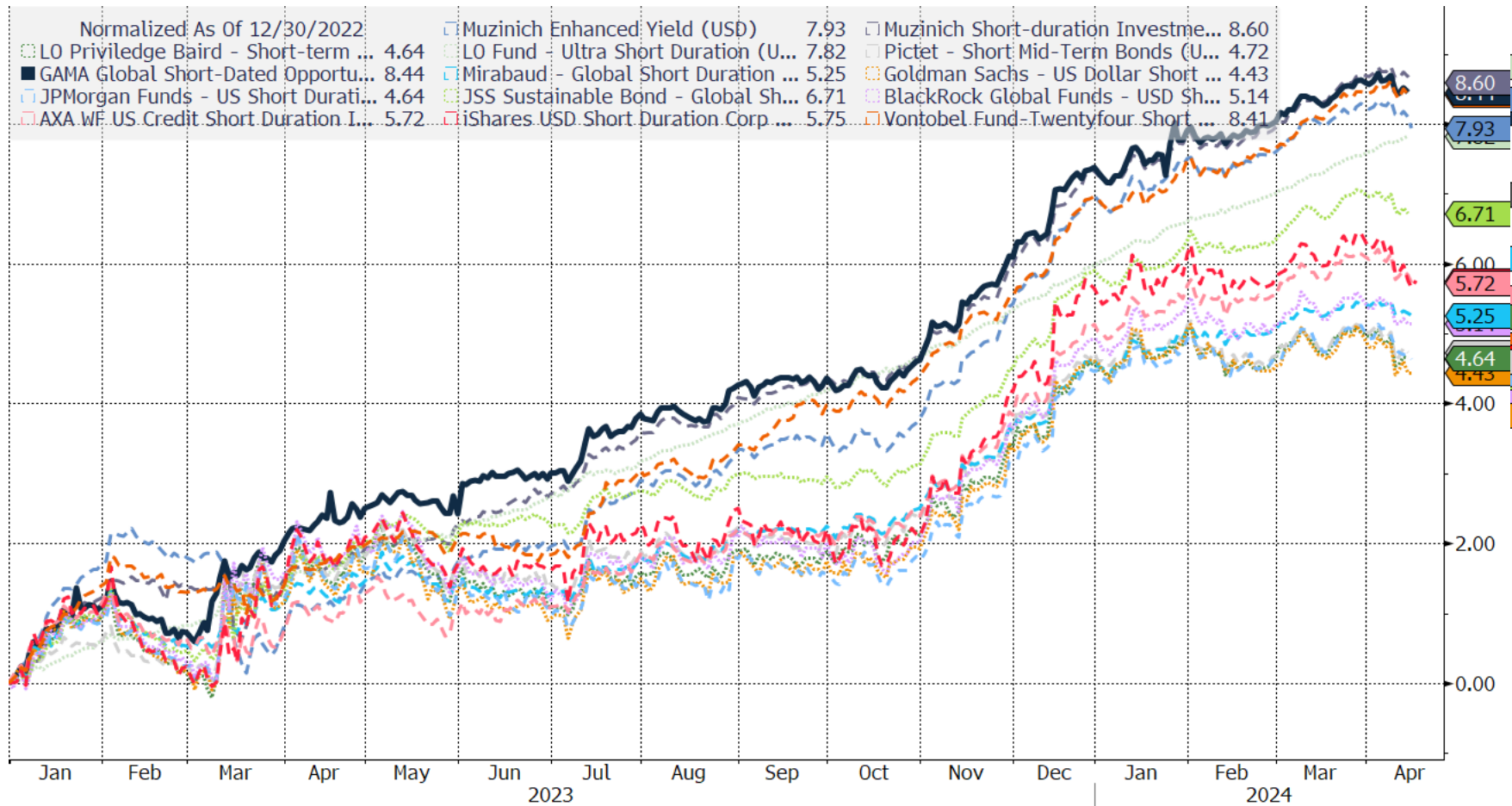


Projected total returns under 3 yield scenarios over 3 years



Sources: Bloomberg, GAMA calculations, *Derived from 5 global different fixed income segments

Global Short-Dated Opportunities - Peer Group (YTD)

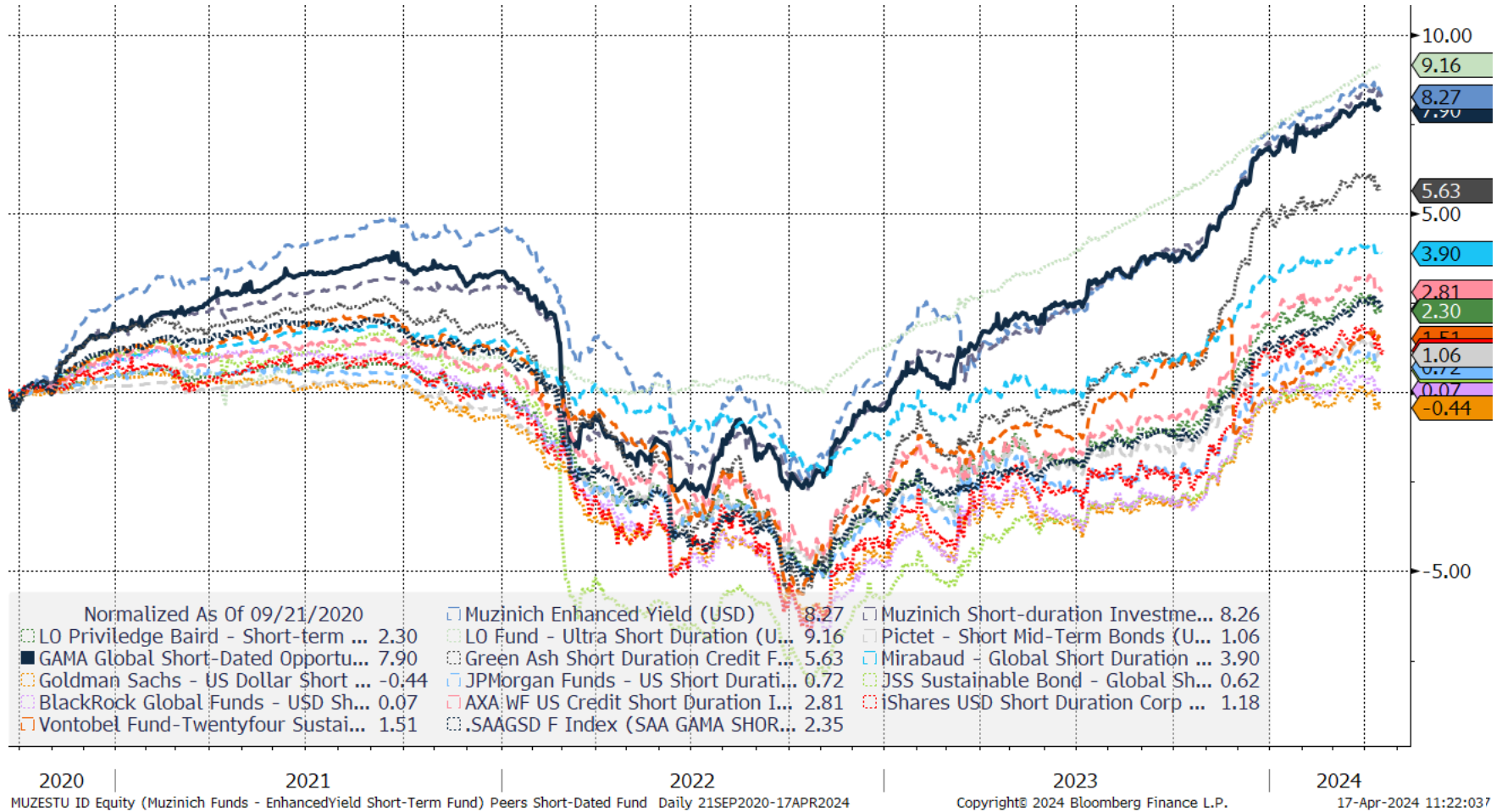


Copyright © 2024 Bloomberg Finance L.P.

17-Apr-2024 11:22:143

Source: Bloomberg, GAMA

Global Short-Dated Opportunities - Peer Group (ITD)



Source: Bloomberg, GAMA, Performance net of fees since inception date (21.09.2020)

Monthly Performance



MONTHLY RETURNS (IN USD, NET OF FEES)						
	2019	2020	2021	2022	2023	2024
January	-	-	0.09%	-0.76%	1.10%	0.49%
February	-	-	0.27%	-2.20%	-0.38%	0.12%
March	-	-	0.40%	-1.04%	1.31%	0.55%
April	-	-	0.27%	-1.10%	0.45%	-
May	-	-	0.20%	0.46%	-0.08%	-
June	-	-	0.27%	-1.37%	0.58%	-
July	-	-	0.08%	0.96%	0.81%	-
August	-	-	0.28%	-0.04%	0.41%	-
September	-	-0.46%	-0.12%	-0.83%	0.09%	-
October	-	0.28%	0.12%	0.41%	0.24%	-
November	-	1.32%	-0.68%	1.30%	1.41%	-
December	-	0.46%	0.40%	0.44%	1.21%	-
Year	-	1.61%	1.59%	-3.75%	7.38%	1.16%

Source: GAMA Asset Management SA, Class USD F

Global Funds – Global Short-Dated Opportunities



Share Class	Class R	Class P	Class N	Class F
Min. Investment	1'000	1 Mios	5 Mios	20 Mios
Management fees	0.60%	0.40%	0.30%	0.20%
EUR	ACC LU2092459143	ACC LU2092460075	ACC LU2092460828	ACC LU2092461800
	DIS LU2092458764	DIS LU2092459655	DIS LU2092460406	DIS LU2092461479
CHF	ACC LU2092459226	ACC LU2092460158	ACC LU2092461040	ACC LU2092461982
	DIS LU2092458848	DIS LU2092459739	DIS LU2092460588	DIS LU2092461552
USD	ACC LU2092459499	ACC LU2092460232	ACC LU2092461123	ACC LU2092462014
	DIS LU2092458921	DIS LU2092459812	DIS LU2092460661	DIS LU2092461636
GBP	ACC LU2092459572	ACC LU2092460315	ACC LU2092461396	ACC LU2092462105
	DIS LU2092459069	DIS LU2092459903	DIS LU2092460745	DIS LU2092461719

Minimum investment amount defined in the currency of each share class.

Blue = active share classes, grey = available but inactive. To activate a new share class, please contact us.

Disclaimer



This marketing document has been issued by GAMA Asset Management SA (hereinafter "GAMA"). This Document is for information purpose only and does not constitute an offer or a recommendation to buy or sell any securities. It is not intended for distribution, use or publication in any jurisdiction where such distribution use or publication would be prohibited. This document is the property of GAMA and is addressed to its recipient exclusively for their personal use. It may not be reproduced (in whole or in part), transmitted, modified, or used for any other purpose without the prior written permission of GAMA. The data are indicative and might differ significantly depending on market conditions. We do not guarantee the timeliness, accuracy or completeness of the information on this document. Information may become outdated and opinions may change, including as a result of new data or changes in the markets. The document may include information sourced from third parties. We are not responsible for the accuracy or completeness of, and do not recommend or endorse, such information. Except to the extent any law prohibits such exclusion, we are not liable for any loss (including direct, indirect and consequential loss, loss of profits, loss or corruption of data or economic loss of any kind) that may result from the use or access of, or the inability to use or access, the materials on this document. The value of investments and any income from them may go down as well as up. Investors may not get back all of their original investment. Past performance is no guarantee of future results. Each investor must make her / his own independent decisions regarding any securities or financial instruments mentioned herein. Investments are subject to various risks, such as credit risk, interest rate risks, currency

risks, or liquidity risks, as well as regulatory, legal and tax risk. The investments mentioned in this document may carry risks that are difficult to assess and quantify and those risks may significantly change over time. Some bond segments with specific features might be considered as complex instruments and may involve a high degree of risks and may be appropriate investments only for sophisticated investors who are capable of understanding and assuming the risks involved. They might therefore be aimed only for those investors that are able to understand the risks involved and are ready to bear their associated risks. Before entering any transaction, investors should consult their investment advisor and, where necessary, get independent professional advice in respect to the risks and suitability of the investment. The liquidity of an instrument may not have a well-established secondary market or in extreme market conditions may be difficult to value, to buy or sell. Tax treatment depends on the individual circumstances of each person and may be subject to change in the future. GAMA does not provide tax advice. Therefore, each investor must verify with his/her external tax advisors whether the securities are suitable for her/his circumstances. GAMA may or may not hold positions in securities as referred to this document in the funds or portfolios managed on behalf of its clients.

© 2021 – GAMA Asset Management SA is authorised and regulated by FINMA as an asset manager of collective investment schemes – all rights reserved.



**Rue de la Pélisserie 16,
CH-1204 Geneva, Switzerland**

**info@gama-am.ch
www.gama-am.ch**

+41 (0)22 318 00 33